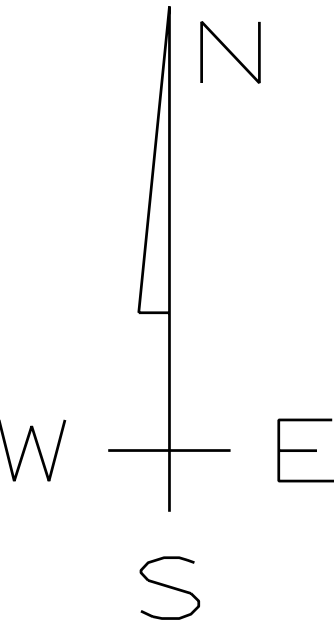


DANE COUNTY DRAINAGE DISTRICT 04  
TOWN OF BRISTOL: T.9N.-R.11E.,  
SECTIONS 7, 8, 9, 16, 17, 18

LEGEND:

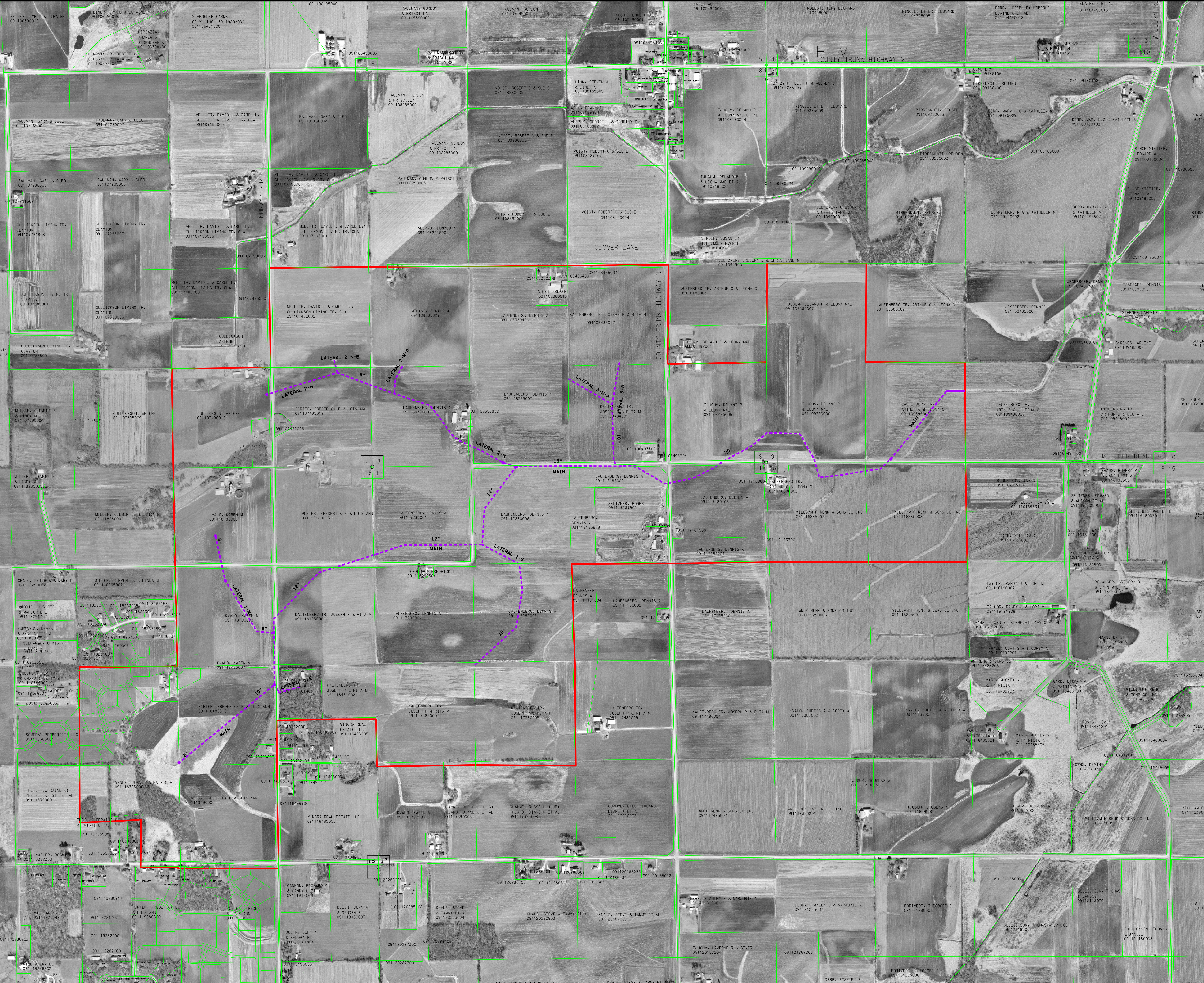
- PRIVATE DRAIN
- DISTRICT DRAIN AND CORRIDOR  
CORRIDOR WIDTH EXTENDS 20 FEET  
FROM TOP DITCH BANK ON  
EACH SIDE OF DITCH
- DISTRICT DRAINAGE TILE AND CORRIDOR  
CORRIDOR WIDTH EXTENDS 20 FEET  
FROM TOP DITCH BANK ON  
EACH SIDE OF TILE
- DISTRICT BOUNDARIES
- PROPERTY LINES
- CROSS SECTION LOCATIONS
- BRIDGE OR CULVERT
- SECTION CORNER



DATA SOURCES:

DRAINAGE DISTRICT BOUNDARY; DISTRICT ASSESSMENT  
SECTIONS; DANE COUNTY LAND INFORMATION OFFICE  
PARCELS; DANE COUNTY LAND INFORMATION OFFICE  
DIGITAL ORTHOPHOTO; DANE COUNTY LAND  
INFORMATION OFFICE (2000)  
STREAMS; DANE COUNTY LAND INFORMATION OFFICE  
DIGITAL WISCONSIN WETLAND INVENTORY DATA;  
WISCONSIN DEPARTMENT OF NATURAL RESOURCES

INFORMATION PROVIDED BY THE DANE COUNTY  
LAND INFORMATION OFFICE ARE COPYRIGHTED  
ORIGINAL WORKS. DANE COUNTY AND ITS  
CO-PRODUCERS RESERVE ALL RIGHTS OF  
AUTHORSHIP GRANTED UNDER U.S. AND INTERNATIONAL  
COPYRIGHT LAWS AND AGREEMENTS.



DR. BY JP/WH	JOB NO. 52-0394.21	MK 08	DATE 07-26-04	REVISIONS ISSUED FOR REVIEW	DR. WH	ENGR. APPL. PINCEL	PROJ. APPL. FJK	PLAN PREPARED FOR: DANE COUNTY DRAINAGE BOARD	PLANS PREPARED BY Engineers/Architects Scientists/Surveyors Owen Ayres & Associates Inc. Madison, Wisconsin	DANE COUNTY DRAINAGE DISTRICT #4 TOWN OF BRISTOL	SHEET NO. 1A	REV. No. 10
CHK. BY FJK	300 0 600 GRAPHIC SCALE IN FEET	DATE 1-18-05	ISSUED FOR APPROVAL									