

www.reaeng.com
 DISTRICT #4
 PROPOSED WATER MAIN
 DISTRICT #4
 PROPOSED WATER MAIN
 DISTRICT #4
 PROPOSED WATER MAIN

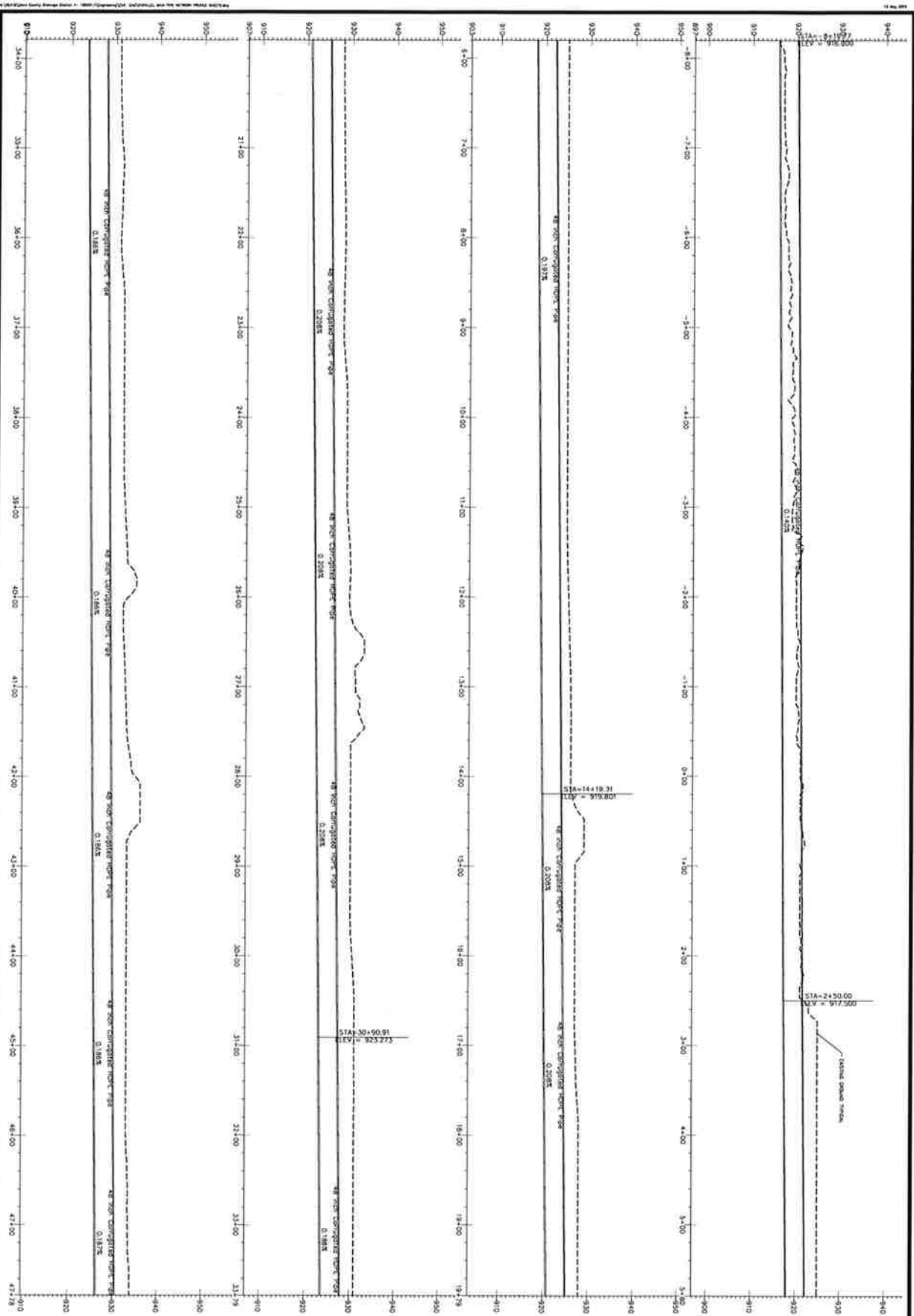
DATE	1/11/11
DRAWN BY	DM
CHECKED BY	DM
APPROVED BY	DM
DESIGNED BY	DM
PROJECT NO.	11-001
PROJECT NAME	DISTRICT #4
PROJECT LOCATION	NEW MAIN OPTION
PROJECT CLIENT	REAR
PROJECT STATUS	PROPOSED

**DISTRICT #4
NEW MAIN OPTION**



Resource Engineering Associates, Inc.
 3510 Parmenter Street, Suite 100
 Middleton, Wisconsin 53562-2507
 Phone: 608-831-5522
 Fax: 608-831-6564
 Web: www.reaeng.com

REVISIONS

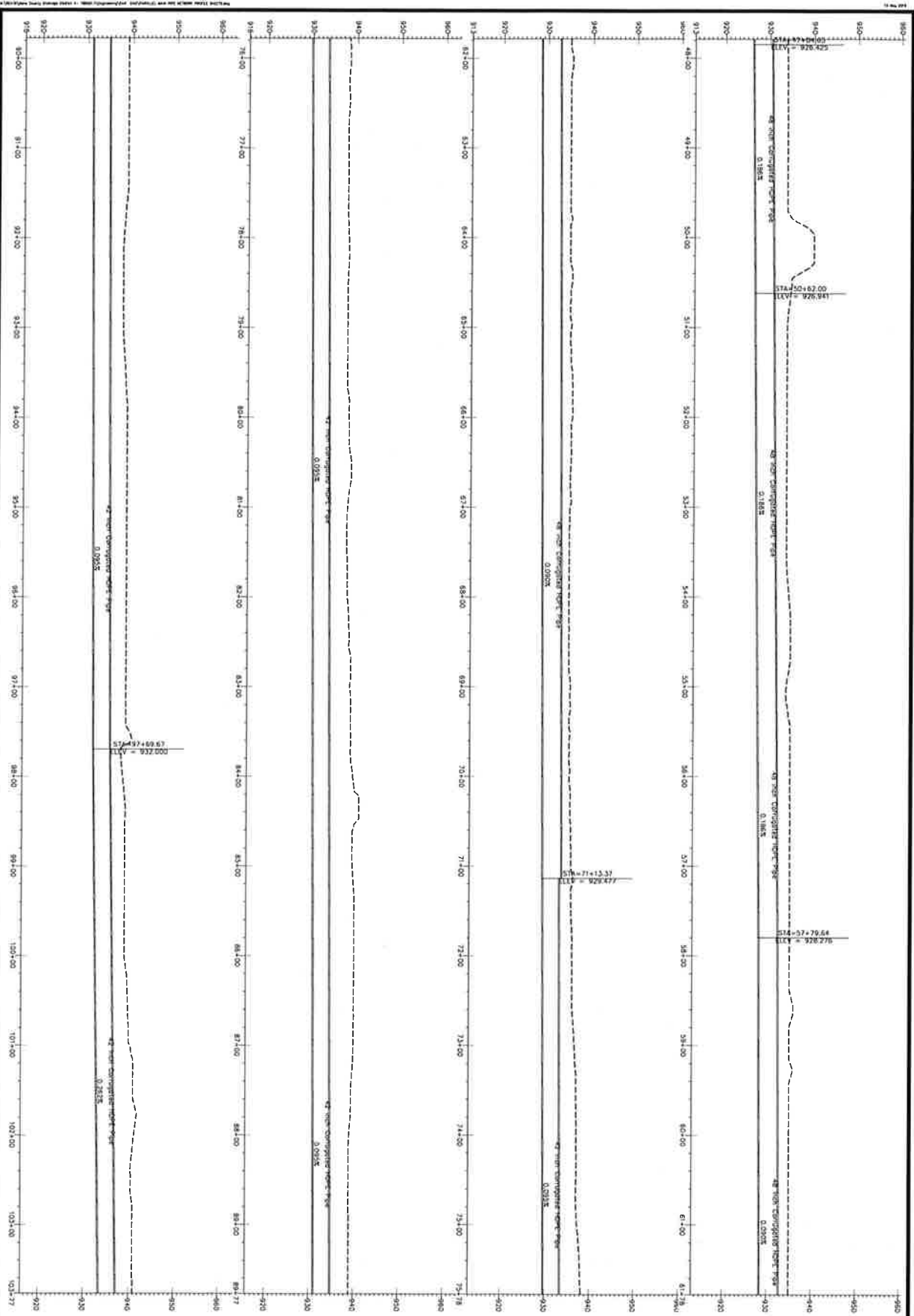


DATE: MAY 2019
 DRAWN: DRW
 CHECKED: DRW
 APPROVED: RJP
 DRAWING NAME: new main dwg
 PROJECT NUMBER: 180551.1
 F2

**DISTRICT 4
 NEW MAIN OPTION**

REA RESOURCE ENGINEERING ASSOCIATES, INC.
 Resource Engineering Associates, Inc.
 3510 Parkcenter Street, Suite 100
 Middleton, Wisconsin 53562-2507
 Phone: 608-831-5522
 Fax: 608-831-6564
 Web: www.reaeng.com

REVISIONS	DATE	DATE



**DISTRICT 4
NEW MAIN OPTION**

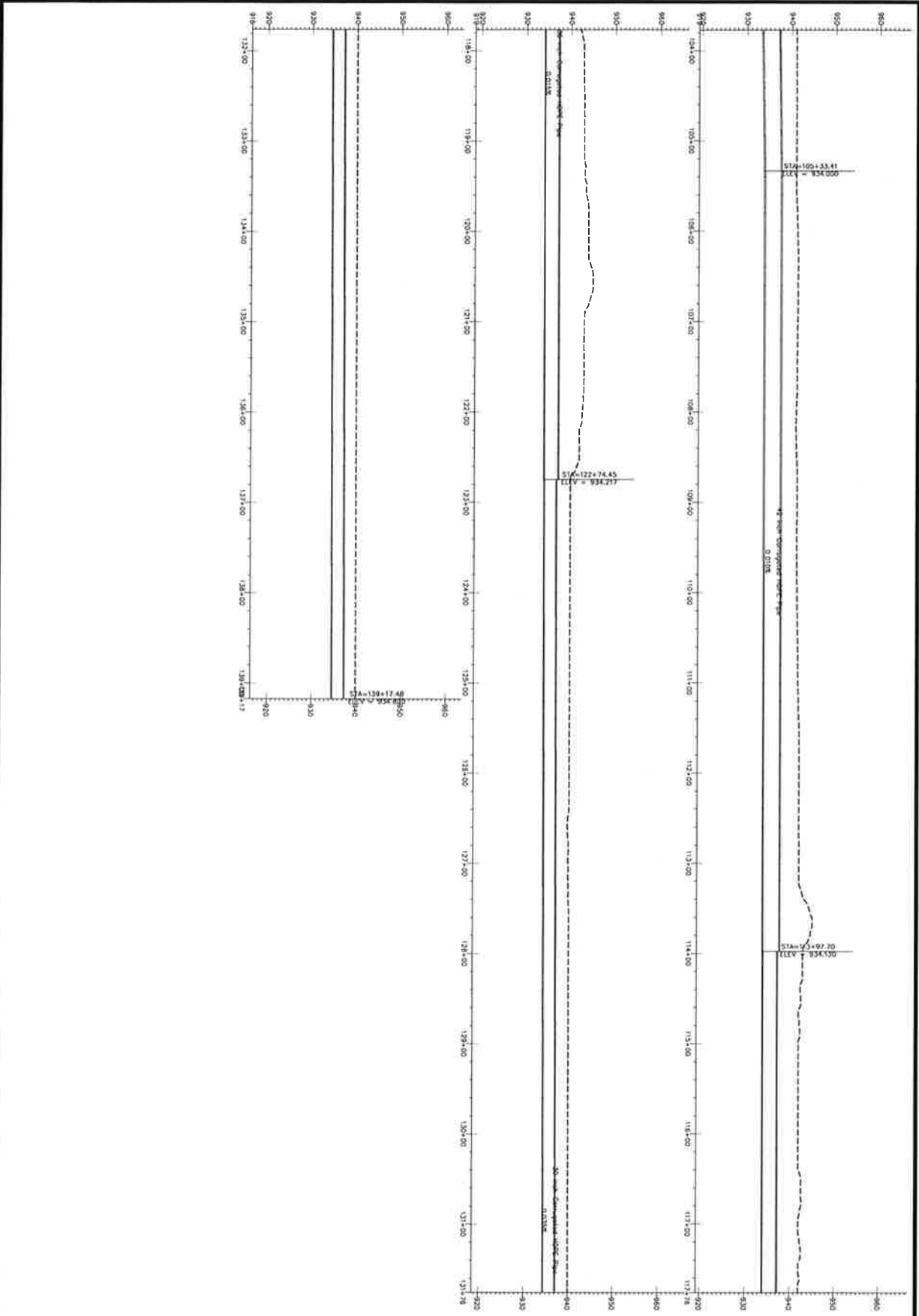
DATE: MAY 2019
 DRAWN: DRW
 CHECKED: DRW
 APPROVED: RJP
 DRAWING NAME: new main dwg
 PROJECT NUMBER: 1800511

F3

REX RESOURCE ENGINEERING ASSOCIATES, INC.
 Resource Engineering Associates, Inc.
 3510 Parmenter Street, Suite 100
 Middleton, Wisconsin 53662-2507
 Phone: 608-831-5522
 Fax: 608-831-6564
 Web: www.rexeng.com

REVISIONS:

DATE	DATE	DATE	DATE



REVISIONS:

DATE	
DATE	
DATE	
DATE	

Resource Engineering Associates, Inc.
 3510 Parmeter Street, Suite 100
 Middleton, Wisconsin 53562-2507
 Phone: 608-831-5522
 Fax: 608-831-6564
 Web: www.reacug.com



DISTRICT 4
 NEW MAIN OPTION

DATE	MAY 2019
DRAWN	DRW
CHECKED	DRW
APPROVED	RJP
DRAWING NAME	NEW MAIN DWG
PROJECT NUMBER	1800511

F4