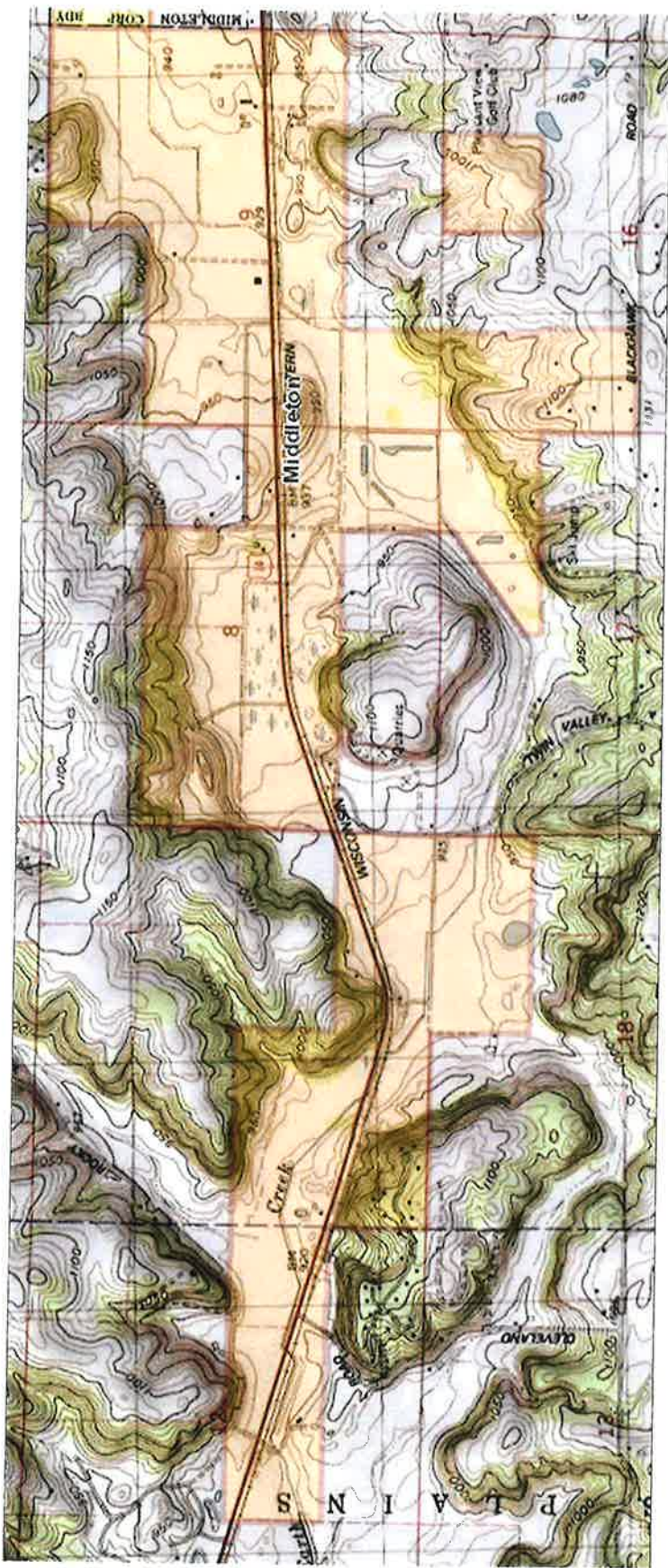


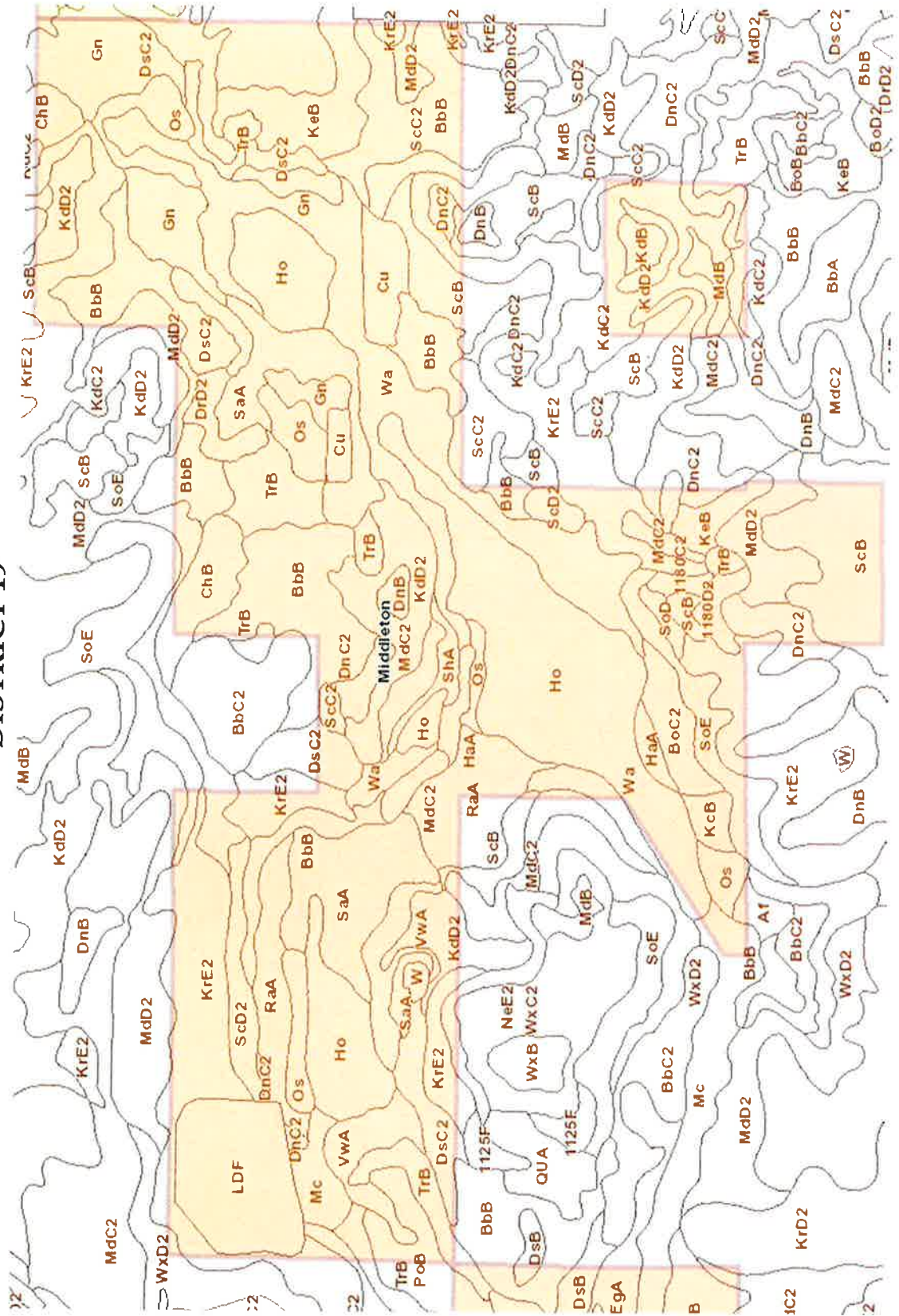
TOPOGRAPHY MAP

DISTRICT 19



SOIL MAP PART ONE

DISTRICT 19

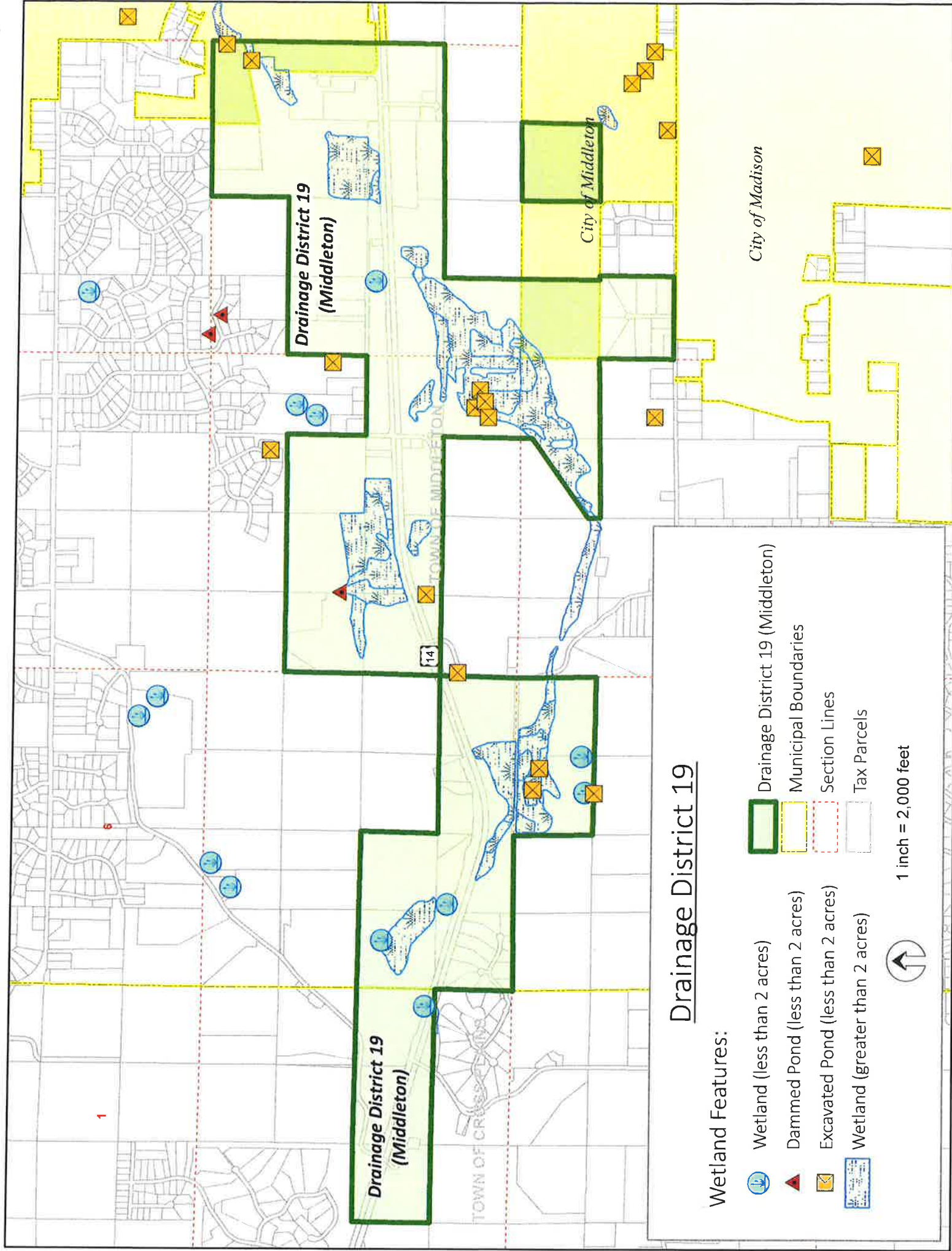




**DISTRICT MAP**







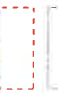

**DISTRICT 19- MIDDLETON**





## Drainage District 19

Wetland Features:

-  Wetland (less than 2 acres)
-  Dammed Pond (less than 2 acres)
-  Excavated Pond (less than 2 acres)
-  Wetland (greater than 2 acres)
-  Drainage District 19 (Middleton)
-  Municipal Boundaries
-  Section Lines
-  Tax Parcels



1 inch = 2,000 feet

ATC Transmission  
Network and Substations

# Badger Coulee Segment 1



Map Area Shown in Red  
Structure Locations and LDC Pole Tag  
Information Provided Where Available

### SUBSTATIONS & FACILITIES

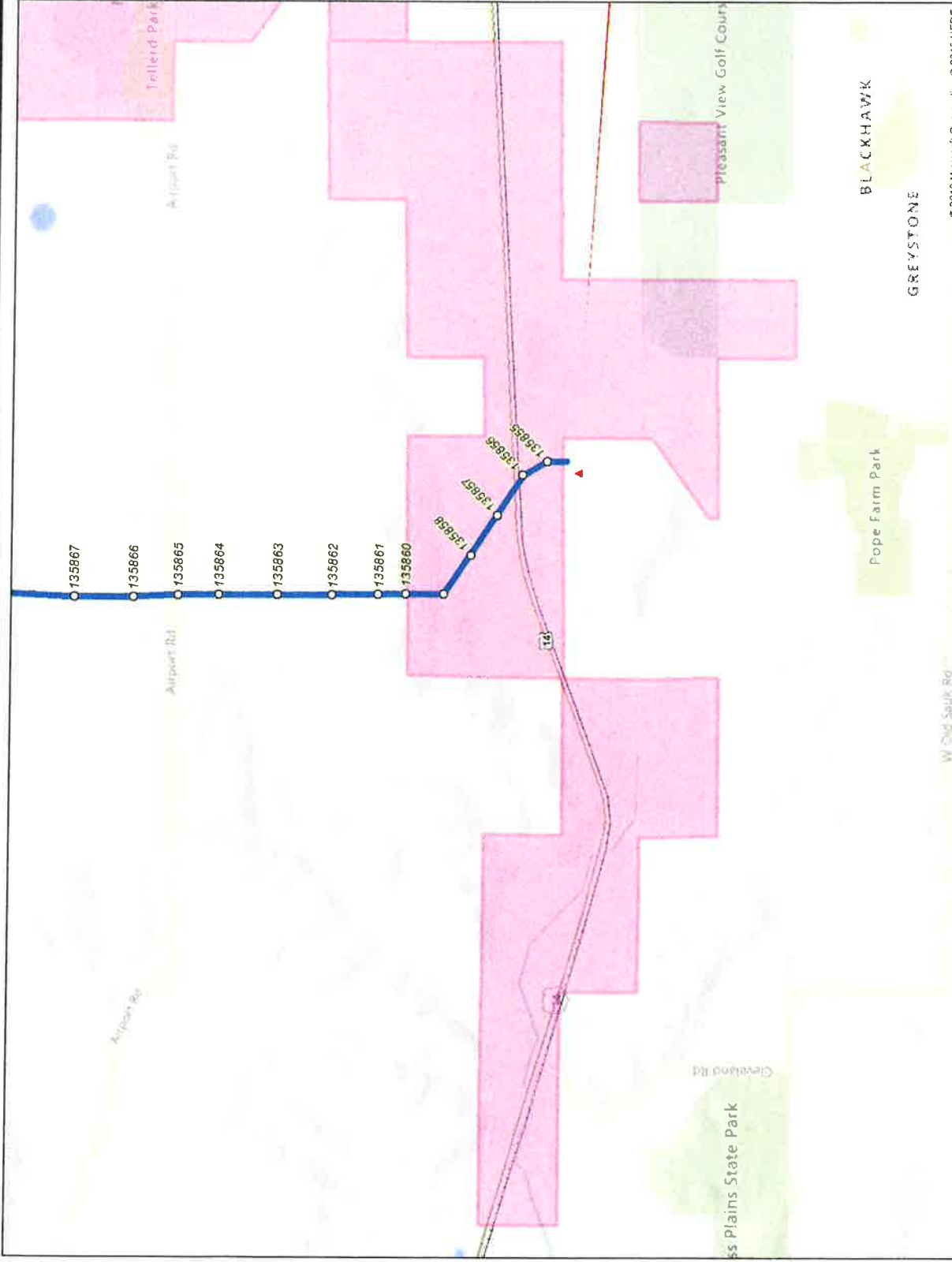
- Substation or Switchyard
- Transmission Structure
- Structure with Pole Location Number

Drainage District Boundary



0 500 1,000 2,000  
Feet

The information provided in this map was created using data submitted to reference agencies and is not intended to be used for any purpose other than the specific project for which it was prepared. The user assumes all liability for any use of this information.



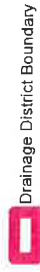
ATC Transmission  
Network and Substations

# Badger Coulee Segment 1

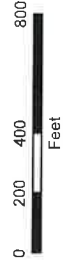


Map Area Shown in Red  
Structure Locations and LDC Pole Tag  
Information Provided Where Available

- SUBSTATIONS & FACILITIES**
- Site Force
  - Substation or Switchyard
  - Transmission Structure
- \*Elevation in feet above sea level.



Drainage District Boundary



This information is provided as a service to our customers. It is not intended for advertising, promotion, or any other purpose. It is provided "as is" without warranty. © 2019 American Transmission Company. All rights reserved.

Revised: November 05, 2019



C:\WORKSPACE\Projects\Badger Coulee Transmission Line Project\Post Order\Drainage District 18.mxd