

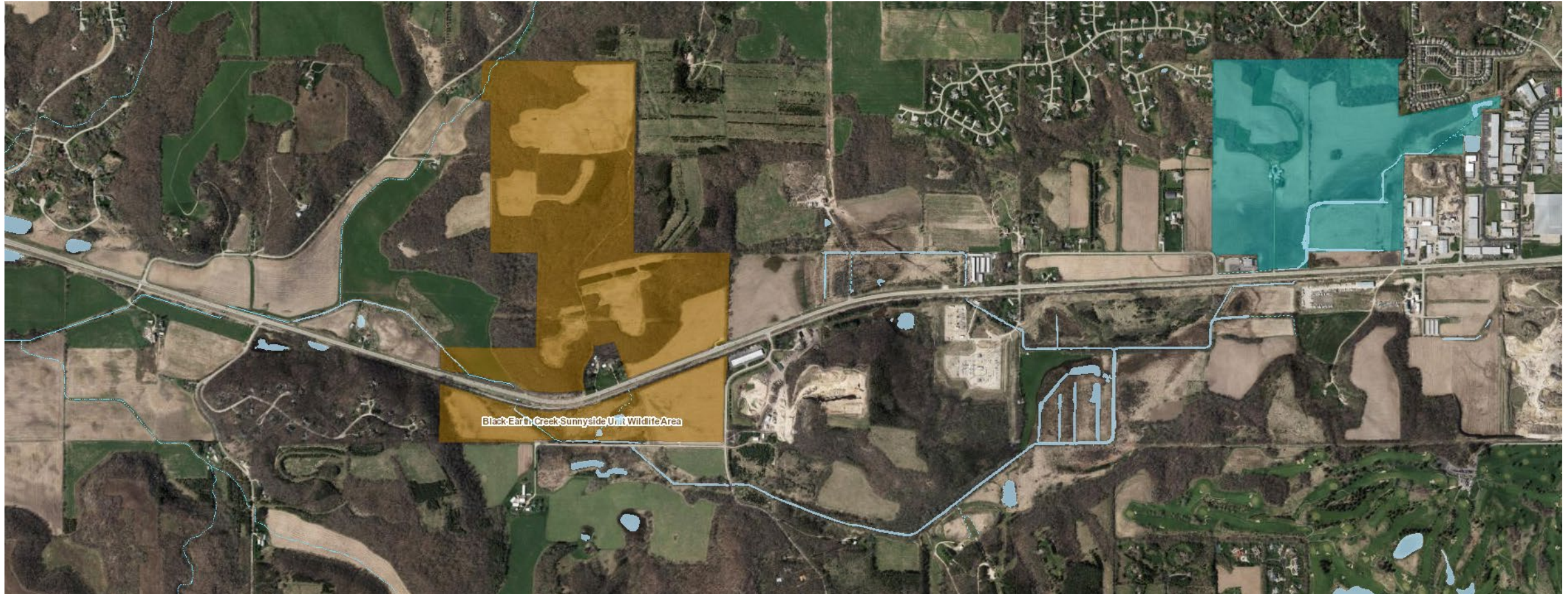
Hidden Oaks Groundwater Study Objectives

- Understand neighborhood water concerns
 - Survey of residents (still open)
- Understand controls on groundwater levels
 - Measure ground- and surface water elevations for 1 year
- Recommend management actions to:
 - Reduce water intrusion into Hidden Oaks basements
 - Improve habitat in the Black Earth Creek Natural Resource Area
 - Protect Black Earth Creek

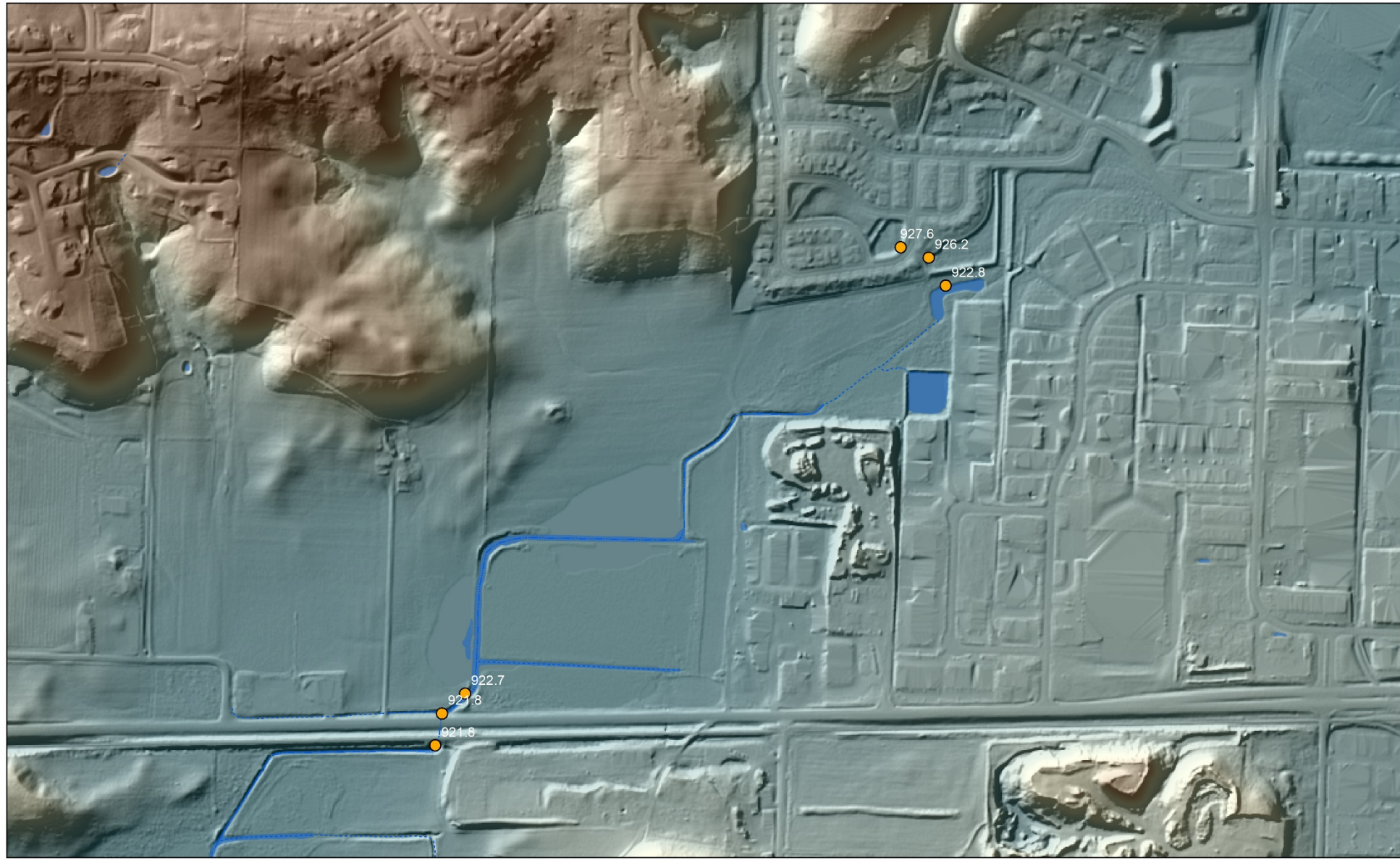


Matt Diebel
Watershed Management Coordinator
Diebel.Matthew@countyofdane.com
(608) 516-0518

Dane County Properties in Drainage District 19



August 12, 2020 Survey

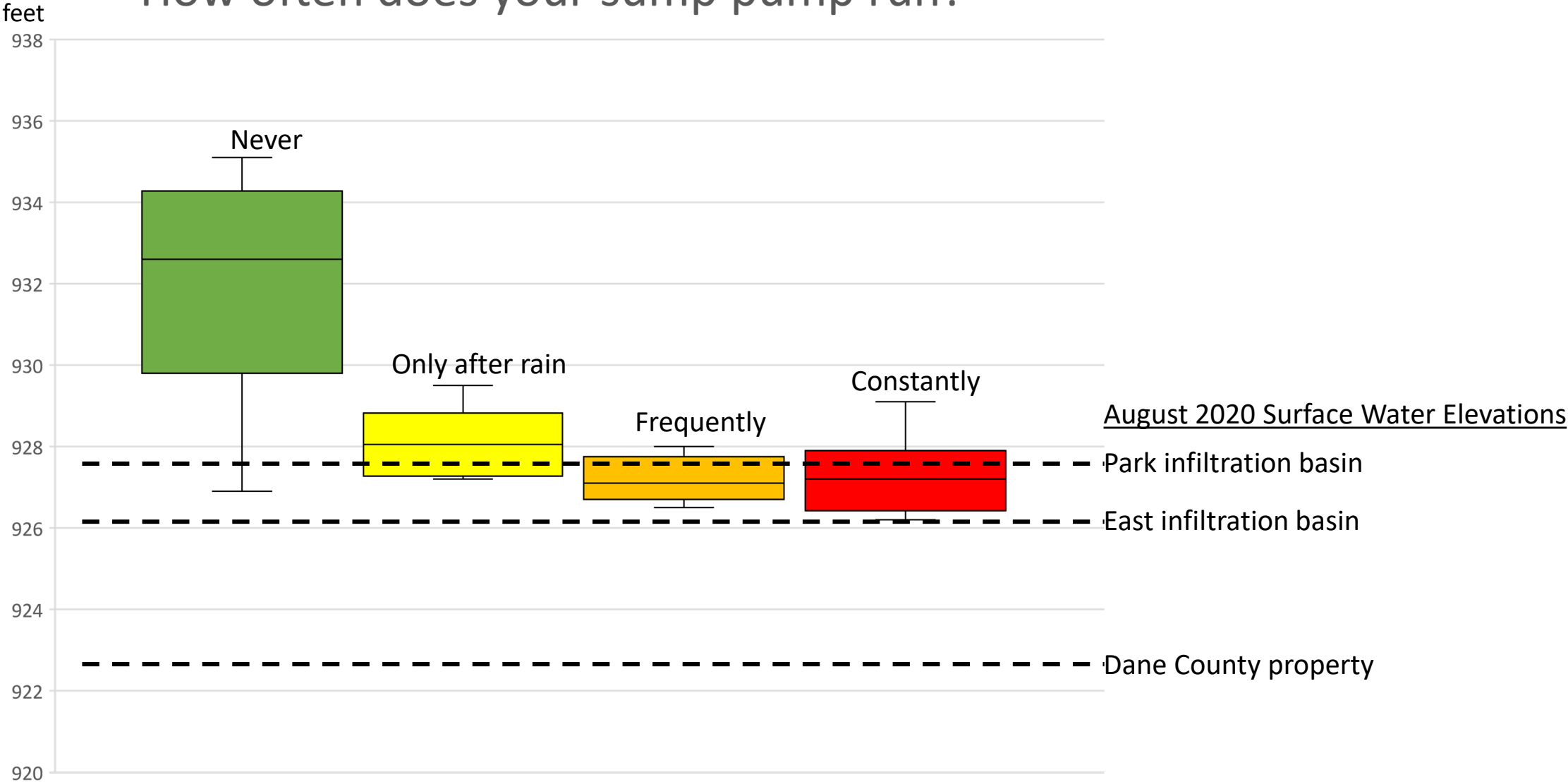


0 500 1,000 2,000 Feet

Preliminary Survey Results



How often does your sump pump run?



Water Surface Elevation Profile

